



August 2000
**The South
Coast
Orchid
Club
Inc.
Gazette**

Editor
Ron Parish
Ph 08 8298 4118
E-mail vcs@ihug.com.au

PRESIDENT TREASURER SECRETARY

J. Higgs

G. Shevlin

M. Baulderstone

MYPONGA
8558 6247

CLOVELLY PK
8276 7652

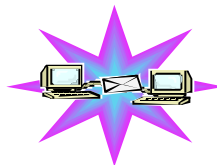
Box 314
OAKLANDS PK
8276 3771

THE NEXT MEETING of the South Coast Orchid Club will be held at 8 pm on August 8th 2000 at the Calvary Lutheran Church Windsong Court Morphett Vale.

THE GUESTSPEAKER : Jill Taylor - "World Orchid Conference in Canada"

DAYTIME GROUP will meet at 2.00 pm. Thursday 10th August 2000 at Harry Lambet's 84 Pennys Hill Road Hackham

REMINDER Merv Steele's barbeque Sunday 13 October 12 to 12.30 pm 98 Corunna Avew Edwardstown . Tea coffee-cordial provided—BYO other & drink also chairs Cost \$7.50 each



**Get your Gazette
off the Net**



For those brave souls who venture into the world of cyberspace I am now in a position to offer your monthly Gazette over the Net.....
Including the September Gazette you will have the option of receiving it by post or electronically.
For this to happen for you, please e-mail me urgently with your E-mail address. And let me know whether you need a copy of Adobe Acrobat Reader. (You will need this to open your gazette when you receive it).
The advantages are many, amongst them are— It will come to you in full colour and more quickly than by post, & of course you will save the Club approximately \$0.70—\$0.80 for each Gazette sent electronically.
Ron Parish



Zygopetalums

These orchids are not at the present time enjoying the same popularity as many other genera, in spite of the fact that they are not difficult to grow & flower.

They belong to the Tribe Maxillariae, Sub tribe Zygopetalinae, & have around 20 species, depending on which books one refers to.

The name refers to the yoking together of the flower segments by the callus, i.e. (Zygon) - Yoke, (Petalon) - Petal.

Zygopetalums are native to Brazil, in sub-tropical regions, & yet can be easily grown in the conditions of South Australia, since in their natural habitat they inhabit regions up to 1700 metres in altitude.

The conditions there can be hot during the day, & downright cold at night, so they do have tolerance temperature-wise. They do have high humidity though, & I believe this is quite important in allowing the plants to grow under a wide range of temperatures

There are many members of the Tribe Maxillariae, so the possible number & variations of hybrids can be extensive. However, the present stage of breeding of Zygos is in its infancy.

Up to 1990, there were registered about 40 crosses only, & by 1999 only around 100. Considering Cymbidiums, with roughly the same number of species to begin with has over 10,000 registered hybrids, Zygos have a long way to go, & the variations will, I think, be enormous.

My intergenerics are limited to date, & comprise

Alangreatwoodara = Z. x Colax x Promenaea

Hamelwellsara = Z x Aganisia x Batemannia x Otostylis x Zygosepalum

Zygocolax = Z. x Colax

Zygoneria = Z. x Neogardneria

Williamara = Alangreatwoodara x Zygoneria.

The most common problem with these orchids seems to be black spotting on the leaves, more prominent in winter, & most people give them some protection from winter rains for this reason. It seems to be a fungal infection which causes this, since application of a fungicide certainly gives me good results. Otherwise I treat them exactly like Cymbidiums, watering, fertilizing & growing medium.

A bonus is their habit of frequently flowering twice a year, many are delightfully perfumed, & some will cut well. Unfortunately some will not cut, & flowers will die overnight. I have not, I'm afraid, sorted these out, but have had some flowers in a vase for three weeks.

Like many orchids, cool weather flowering seems to be much better than hot weather, and for this reason late winter & early spring flowerings usually present better quality & longer keeping blooms. The maximum number of flowers that I have had so far is nine on one spike, & quite often one can expect two spikes to each new growth. The most spikes per growth I have had is five. This was on a Zygoneria, & this hybrid holds good promise for smaller plants, yet more flowers.

The Zygocolax hybrids that I have flowered tend to produce nice shapely miniature blooms, with tall spikes that go straight up, and the colouring is dark, especially the labellum, being dark solid purple in most cases. They are easy to grow, & usually bloom on the second growth from flask.

Zygonerias have larger flowers, & some I have flowered were good enough to clone. Very good shape, some dark, but take an extra season to flower. So far I have not been able to get any of these up to a good size so they can show their full potential, but give it time

Alangreatwoodara hybrids so far have produced mainly yellow blooms, spotted brown. The shape has not been very good yet, however some seedlings have been identical to ordinary Zygos, with very good shape & colour. I interpret this as being the result of the Promenaea genes not showing through. Promenaea seems to reduce the size & particularly the number of flowers to the spike. It also reduces the size of the plants so there is a good possibility of getting smaller plants, with nicely shaped flowers. Possibly, give it time as well!

Continued next page



For those who have not tried these plants yet, give it a go. Treat them as you would Cymbidiums, & if you do have black spotting, use a fungicide, & give them shelter from the weather during the colder months. They do have a tendency to push themselves up in the pot, & expose their roots. I usually just pot them on, a little lower, so that the new roots are in the mix, & the plants do grow & flower better.

Good growing Bill Fisher...

A short note from the makers of absorba-stone on how to use it (Permission to copy excerpt held from Manufacturer)

"PLEASE-NOTE ABSORBA-STONE PRODUCTS WILL IN THE VERY NEAR FUTURE HAVE A **FERTILISER** SPECIFICALLY BLENDED TO GIVE THE BEST RESULTS WHEN USING OUR ABSORBA-STONE AND IT WILL WORK OUT TO BE QUITE CHEAP TO USE.

IN THE MEANTIME JUST SOAK THE ABSORBA-STONE FOR 24 HOURS IN WATER WITH PHOSTROGEN OR A LOW NITROGEN FERTILISER ADDED AND JUST POT UP, IT'S THAT EASY.

WE SUGGEST THAT WHEN FERTILISING USE PHOSTROGEN AT HALFSTRENGTH ONLY ONCE A FORTNIGHT REMEMBER ABSORBA-STONE CONTAINS SILICA WHICH IS A POWERFUL NUTRIENT IN IT'S OWN RIGHT."

(There will be a brochure on the notice board next meeting)

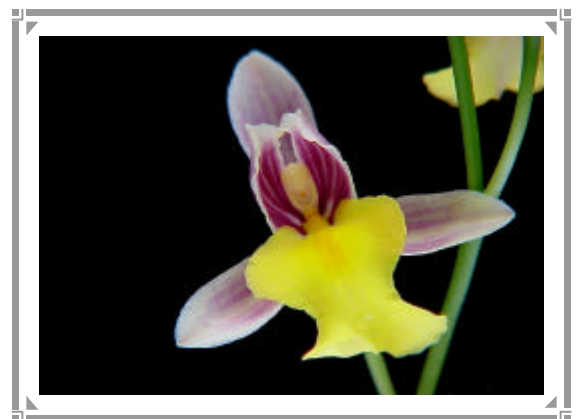
Mexicoa

This species hails from Mexico (hence the name)
Mexicoas are epiphytic in humid forests from about 800 to 1500 meters above sea level.

I grow my plant in the Cattleya House in a tray on a hot water service and under the hanging cattleyas thus giving the plant a little more shade.

The leaves are rather thin (like many Oncidium species).

The flower of this species is only about 1.50 cm across but it is brightly coloured and attractive when in flower with possibly 4—5 flowers out at one time.



Mexicoa Ghiesbreghtiana



Tip for the Month

Training Young spikes to grow straight..

Using an old toilet roll tube or glad wrap tube—place the tube over the spike and place a stake through the tube also so that the spike will eventually grow up along the stake.

The tube can be removed with a scissors when the spike is tall enough to tie.

This months Raffle Plants from Geoff Spear Orchids Thanks Geoff..

Sleeping Nymph 'Elegants' x Valley Regency 'Quatro' (Should be a pink)
(Valley Paradise x Guardalvin Pastel 'Shipmate') x Kakadu 'Jessica' (Should be pink)
Kellys Winter (Should be yellow)
Valley Blush 'White Beauty' x Winter Wonder 'Miranda' a white
(Bethlehem x Pendragon) No 1 x (Hocolada Triumph) a polychrome
(Poetic Winter x Winter Wonder 'Baby Doll') x Poetic Fair 'The Beaut' a white (2 plants)
(Palace Court x Zumma Boyd 'Sharon') x Solana Beach 'St, Francis' 4n a pink
(Poetic Fair x Winter Wonder 'Baby Doll' x Lovely Angel 'Ship Shape' a white

AMESIELLA

This species is endemic to the Philippines & was originally thought to be a var. of Angraecum from St. Africa.

I grow my plant in the Cattleya House reasonably high to achieve a uniform temperature & light.

The plant is a miniature rarely exceeding 150mm tip to tip across the leaves.).

The flower of this species is only about 1.50 cm & pure glistening white with a spur similar to Angraecum When in flower it may have possibly 4—5 flowers out at one time.



Amesiella phillipensis

I HAVE INCLUDED HERE A NUMBER OF INTERESTING WEBSITES THAT MEMBERS WHO SURF THE NET MAY FIND INTERESTING TO VISIT—I WILL ADD TO THIS AS ADDRESSES COME TO HAND.

Australasian Native Orchid Society
<http://www.ozemail.com.au/~graemebr/>

The Orchid Weblopedia
<http://conbio.bio.uci.edu/orchid/>

Orchids.Net - The Site for Orchids
<http://www.orchids.net/>

The Orchid Garden
<http://fly.hiwaay.net/~rjmartin/Orchids.html>

BOTANA, the Orchids ReSource homepage
<http://www.botana.com/tors.html>

Orchid, an Encarta Encyclopedia Article Titled Orchid
<http://encarta.msn.com/find/Concise.asp?ti=040DB000>

Asian Species Orchids from Vietnam
<http://www.vietnamonline.com/orchids/>

Orchids Australia
<http://www.infoweb.com.au/orchids/>

Brazilian Orchids - Welcome
<http://delfina.simplenet.com/page2.htm>

Orchids species of Indonesia, including Paphiopedilum, Phalaenopsis and Dendrobium
<http://www.geocities.com/RainForest/Vines/9686/>

Australasian Epiphytic and Lithophytic Orchids
<http://www-personal.une.edu.au/~mgray2/epiphyte.htm>

Orchid Books from the AOS
<http://www.orchidweb.org/bookstore/>

Software, magazines, books
<http://reseau.chebucto.ns.ca/Recreation/OrchidSNS/wbooks.html>

JULY FLORAL COMPETITION RESULTS

Cymbidiums are coming to the fore now and it was appropriate that, on the night when we had a speaker on Cymbidiums, they should take out the flower of each division. Another sign of the times is the increasing number of Australian Native plants being benched. There are a number of "?" in the owner column this month. Would the owners of the plants see me at the August meeting so I can correct the records and you can get your points. Please make sure you get the new labels we have introduced and fill in your name on the rear of the label.

First Division

Flower of the Division

Cym. Without Peer Soft Touch Grown by Graham Shevlin

51 pastel pink flowers and 3 buds were carried on 3 spikes of 750mm. The 20mm wide lip was yellow with a soft pink edge. The growing medium was bark and isolite

Aust.Nat.Epi Hybrid	<i>Den Hilda Poxon 'June'</i> Den. Hilda Poxon	M. Cunningham 3 D. & I. Attenborough 2
Cymbidium > 90mm	<i>Cym. Tracy Reddaway 'Marie'</i> <i>Cym. Royal Fare 'No 5'</i>	D. & I. Attenborough 3 S. Ng 2
Cymbidium 60—90 mm	<i>Cym. Without Peer 'Soft touch'</i> <i>Cym. Peggy Sue 'Five'</i> <i>Cym. Without Peer 'Soft Touch'</i>	G. Shevlin 3 S. Ng 2 ? 1
Cymbidium < 60mm.	<i>Cym. Cherry Cola 'Geyserland'</i> <i>Cym. Mini Mint 'Brenda Marie'</i> <i>Cym. (Dream Valley x Summer Cloud)</i>	S. Ng 3 M. Baulderstone 2 ? 1
Laeliinae Std >100mm	<i>C. Old Whitey x Lc. Persepolis</i>	G. & M. Voskamp 3
Laeliinae Non Std Other	Lc. Lilac Charm	G. & M. Voskamp 3
Laeliinae Other hybrid	<i>Ctna. Brandi 'O.C.'</i>	G. & M. Voskamp 3
Standard Paphiopedilum	<i>Paph. (Sheed Key x Dene Hurst)</i> <i>Paph. (Tribute x Small WorldL)</i>	H. & B. Viney 3 H. & B. Viney 2
Other Species	<i>L. anceps var Chamberlains</i>	G. Shevlin 3

Second Division

Flower of the Division

Cym. (Rincon x mastersii) x Olymilum Grown by M. Young.

This plant had 17 delicate pale pink flowers measuring 81 x 63mm on a 600mm spike. The lip had red / Mauve spots with a pale lemon yellow midlobe. It was grown in a small bark and isolite mix.

Aust.Nat. Terrestrial Hybrid	<i>Ptst Nodding Grace</i>	J. Kelly 3
Cymbidium > 90mm	<i>Cym. (Rincon x Westholme)</i> <i>Cym. Unknown</i>	D.J.& L.G. Williams 3 R. Young 2
Cymbidium 60—90 mm	<i>Cym. Rincon x mastersii) x Olymilum</i> <i>Cym. Marroong 'Chieftain'</i>	M. Young 3 N. Gitsham 2
Cymbidium < 60mm	<i>Cym. Jimbo Tupp x Coraki</i> <i>Cym. Mini Dream 'Pure Gold'</i>	M. Young 3 D.J.& L.G. Williams 2
Standard Paphiopedilum	<i>Paph. Unknown</i>	S. Wilcox 3
Oncidium / Odontoglossum	<i>Mtssa Estralita</i>	S. Wilcox 3
Other Hybrids	<i>Epi. Ibaguense</i>	N. Gitsham 3

Open Division

Flower of the Division and Flower of the Night

Cym. Without Peer 'Soft Touch' Grown by Moss Bray

Four upright, 800cm spikes carried from 15 to 22 delicate soft pink flowers which measured 85mm wide. The labellums were a soft cream with the pale pink of the tepals around the edge. A well grown and displayed plant.

Aust.Nat.Epi Species	<i>Bulb. schillerianum</i>	M. Tiggeman	3
Aust. Nat. Epi. Hybrid	* <i>Den.</i> (Hastings x Ku-Ring-Gai)	D.Biebrick	3
	<i>Den</i> Resserka 'Moriaty'	T. Garrard	2
	<i>Den</i> (Eureka x Aussie Parade)	?	1
Aust Nat. Terrestrial Species	<i>Ptst. russellii</i>	M. Tiggeman	3
	<i>Ptst. pedunculata</i>	D. Biebrick	2
	<i>Ptst. nutans</i>	D. Biebrick	1
Aust. Nat. Terrestrial Hybrid	<i>Ptst.</i> Nodding Grace	D. Biebrick	3
Cymbidium > 90 mm	<i>Cym.</i> Kahn Flame 'Emperor'	M. Bray	3
	<i>Cym.</i> (Showoff x Valley Regent)	H. Herrmann	2
	<i>Cym.</i> (Earlyana x Bexley)	M. Tiggeman	1
Cymbidium 60—90 mm	<i>Cym.</i> Without Peer 'Soft Touch'	M. Bray	3
	<i>Cym.</i> Mini Mint 'Odile'	H. Gerber	2
	<i>Cym.</i> ((Showgirl x Sarah Jean) x Kenya Sunset)	H. Gerber	1
Cymbidium < 60mm	<i>Cym.</i> Peggy Sue 'Five'	H. Gerger	3
	<i>Cym.</i> (parishii x canaliculatum)	H. Gerber	2
	<i>Cym.</i> (Kuran Magi x Ruby Eyes)	H. Herrmann	1
Laeliinae Std >100mm	<i>C. Pastoral</i> 'Innocence'	T. De Ionno	3
	<i>Blc. Mount Sylvan</i> 'Dee Pee'	?	2
	<i>Blc. Rosslyn Reisman</i>	R. & I Parish	1
Laeliinae Std <100mm	<i>Slc.</i> Love Hero ' Himanu'	P. & G. Flavel	3
Laeliinae Other Hybrid	<i>Epi. Rhody</i>	R. & I. Parish	3
Standard Paphiopedilum	<i>Paph.</i> (Roger xGigi)	R. & I. Parish	3
	<i>Paph</i> Totally Awesome	A.& R. McKay	2
	<i>Paph.</i> Beauty '71'	A. & R. McKay	1
Novelty Paphiopedilum	<i>Paph.</i> (Adelaide x Via Prokulli)	H. Herrmann	3
	<i>Paph.</i> chamberlainianum x victoria—mariae	R. & I. Parish	2
	<i>Paph.</i> Ardrossan	H. Herrmann	1
Species Paphiopedilum	<i>Paph. wardii</i>	P. & G. Flavel	3
	<i>Paph. insigne</i>	D. Biebrick	2
	<i>Paph. insigne</i>	D. & J. Higgs	1
Oncidium/Odontoglossum Alliance	<i>Onc. Sharry Baby</i> 'Sweet Fragrance'	P. & G. Flavel	3
	<i>Onc. Gower Ramsay</i>	R. & I. Parish	2
	<i>Onc. Sharry Baby</i> 'Sweet Fragrance'	A. & R. McKay	1
Other Species	<i>C. percivaliana</i>	P. & G Flavel	3
	<i>Rssgls insleayi</i> (Rssgls= Rossioglossum)	R. & I. Parish	2
	<i>Enc. radiata</i> var <i>Costaricuensis</i>	R. & I. Parish	1
Best Seedling	<i>Den.</i> Eureka x Aussie 'Parade 'BD'	T. Garrard	3

Winter Show 2000

Congratulations to all the winners, there were some excellent plants put in for the show.

GRAND CHAMPION

Congratulations to Moss Bray for his well presented *Cymbidium Without Peer* 'Soft Touch'

RESERVE CHAMPION

Blc Bonanza Queen 'Panamint' which was grown by Peter and Geraldine Flavel.

OTHER CHAMPIONS

CHAMPION	PLANT	GROWN BY
OPEN DIVISION	<i>Cym.</i> Without Peer 'Soft Touch'	Mr. & Mrs. M. Bray
FIRST DIVISION	<i>Cym.</i> Clarisse Austin 'Cape Kidnapper'	Mrs. L. N. Gunn
SECOND DIVISION	<i>Den.</i> (Zip x Ellen) x Aussie Starlight	Mr. D. & Mrs. K Cammack
CYMBIDIUM LARGE > 90MM	<i>Cym.</i> Clarisse Austin 'Cape Kidnappers'	Mrs. L. N. Gunn
CYMBIDIUM MEDIUM 60-90mm	<i>Cym</i> Without Peer 'Soft Touch'	Mr. & Mrs. M. Bray
CYMBIDIUM SMALL <60mm	<i>Cym.</i> Ice on Fire 'Nikkietta'	Mr. & Mrs. G. Shevlin
LAELIINAE	<i>Blc.</i> Bonanza Queen 'Panamint'	Mr. P & Mrs. G. Flavel
PAPHIOPEDILUM	<i>Paph.</i> Adelaide Magic x Via Prokuli	Mr. & Mrs. H. Herrmann
ODONTOGLOSSUM / ONCIDIUM	<i>Onc.</i> Sweet Sugar 'Emperor'	Mrs. R. Moore
AUSTRALIAN NATIVE	* <i>Den.</i> (Hastings x Ku-Ring-Gai)	Mr. D. Biebrick
ZYGOPETALUM	<i>Z.</i> Syd Monkhouse	Mr. P & Mrs. G. Flavel
OTHER GENERA	<i>Pholidota bracteata</i>	Mr. G. & Mrs. M. Voskamp
SPECIES	<i>Paph. insigne</i>	Mr. H. Gerber
SEEDLING	<i>Cym.</i> (Boyds Winter x Sensation)	Mr. A. Propster

From the Greenhouse

A pat on the back to all members who contributed to the Winter Show at Colonnades—the display really looked quite stunning. Once again I received comments about the fencing—it certainly does finish the displays off well. Thank you to all helpers.

With all the orchid flowers around at present, I'm sure some, if not all, of you must have flowers indoors as decorations. A point to keep in mind, whether your flowers are cut or still in the pot, is not to put them near a fruit bowl. As fruit ripens, or matures, it gives off ethane gas, especially apples, and this will cause your flowers to go off quickly. This can be very disappointing as they should last for some weeks.

Carrying on from last month when I mentioned deformed flowers, a member gave me the following article which appeared in The Advertiser on Friday, July 7th, entitled:

"Plant mutations linked to thinning of ozone layer.

Paris: Depletion of the ozone layer is likely to inflict lasting genetic damage on plant life through exposure to strong ultraviolet light, researchers have found.

High levels of ultraviolet B caused DNA damage and mutations among tobacco plants and thale cress in laboratory conditions, Swiss and German scientists report in 'Nature', the British science journal. In some plants, mutations occurred in the reproductive cells, meaning that the changes were handed on to subsequent generations.

University of California plant biologist Anne Brit said the study findings 'may represent the tip of a mutational iceberg.'"

Looks like our 'freak' orchids may be on the increase! The mind boggles!

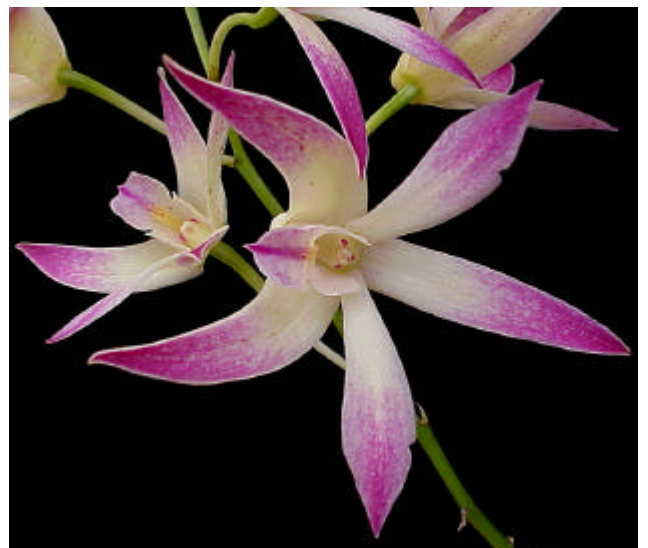
Another thought to ponder—if people who live in glasshouses shouldn't throw stones, does that mean that people who live in greenhouses shouldn't throw moss rocks?

Jane Higgs
President.

Den Anne's Rainbow Surprise 'Agnes' 118

A piece of this is worth about \$70.00 , Just ask Murray Baulderstone who acquired it at a Dutch auction last meeting

The mother plant is owned by Keith Northcote and is much prized by him



REGISTERD BY AUSTRALIA POST
PUBLICATION No P.P.9516/00003
IF UNDELIVERED PLEASE RETURN TO
PO BOX 134 OAKLANDS PARK 5046

**SURFACE
MAIL**

**POSTAGE
PAID
AUSTRALIA**